

STUDIES AND DISABILITY

Finding a suitable place of study

Kathrin Rübartsch

Gesamtschule Hardt

Erasmus + Project 2018/2019

Mrs. Vollmer and Mr. Amels

07.06.2019

Content

1	Introduction.....	4
2	General facts	5
2.1	Definition of a disability	5
2.2	Courses and effects of a disability	5
3	Personal needs	6
3.1	Faculty related requirements	7
3.2	Campus related requirements	7
3.3	City related requirements.....	7
4	Heinrich-Heine-University Düsseldorf	8
4.1	Faculty related analysis	8
4.2	Campus related analysis	9
4.3	City related analysis.....	10
5	RWTH University Aachen.....	11
5.1	Faculty related requirements	12
5.2	Campus related analysis	13
5.3	City related analysis.....	15
6	Comparison of Universities	16
7	Conclusion.....	17
8	List of references.....	19
9	Annex	24

1 Introduction

What do I like to study? Where do I like to study?

These are important questions everyone should answer to find a suitable place of study. Focusing one's skills and professional aims it seems to be easy to find the right place of study.

Disabled persons are confronted with far more questions. Does the university support disabled students during their studies? Is the campus barrier-free? How can learning and everyday life be connected without obstacles?

Since I am a person who aims to study chemistry and who is affected by a walking disability it is of high significance to find the university which suits my personal demands and health condition the best.

This term paper will be an analysis of information about studying with a disability provided by the universities on the internet. I will compare two universities which are located in the chemical core region "Rhine-Ruhr" based on requirements concerning my personal needs. The universities which are going to be compared are Heinrich-Heine-University in Düsseldorf and RWTH Aachen University.

I am convinced that the results of the term paper will help me to decide which university could be best to do my studies. It will show if the universities are able to integrate disabled students or if any improvements have to be done.

2 General facts

2.1 Definition of a disability

Volume IX of German social law defines disabled persons as...

*...”Menschen mit Behinderungen [...], die körperliche, seelische, geistige oder Sinnesbeeinträchtigungen haben, die sie in Wechselwirkung mit einstellungs- und umweltbedingten Barrieren an der gleichberechtigten Teilhabe an der Gesellschaft mit hoher Wahrscheinlichkeit länger als sechs Monate hindern können” (§2 paragraph 1 SGB IX Begriffsbestimmungen).*¹

This means one can divide a disability into three different sections. A physical, a mental or a psychological disability. Physical disabilities include for instance motor impairments, a limitation of vision, a limitation of hearing ability and chronic diseases. Suitable examples for a mental disability are learning difficulties or below average intelligence. Psychological disabilities are impairments caused by personality disorders, addiction, neuroses or psychoses (compare annex Graphics 1).²

2.2 Courses and effects of a disability

Dependent on the severity and kind of disability every disability is individual.

Thus there are many differences concerning health care needs and support in every-day life.

In general one can say that being disabled not only includes the health condition. It is a challenge between one’s personal health condition and social and environmental factors.

A disability can be congenital or it can be caused by an accident or a disease. Environmental factors such as inaccessible public buildings and public

1 Wasmund,Steffen: § 2 SGB IX Begriffsbestimmungen. In: sozialgesetzbuch-sgb. <https://www.sozialgesetzbuch-sgb.de/sgbix/2.html>. [01.06.2019.]

2 Madel,Andreas: Arten von Behinderungen. In: barrierefreie-immobilie. <https://www.barrierefreie-immobilie.de/barrierefreies-leben/arten-von-behinderungen/>. [01.06.2019.]

transportation can lead to a limitation of activity.

In addition, negative attitudes and missing support and tolerance in the society can complicate the life of a handicapped person (compare annex Graphics 2).³ However one should remember that everyone could be affected by a disability, especially at high age. Being disabled can require a lot of medical care and therapy.⁴

3 Personal needs

From my point of view, studying is an important foundation of everyone's life. One should choose a degree course which guarantees that one will enjoy the future profession.

I took the decision to study a subject which fits my personal skills best. In addition, the studies should offer the opportunity to have an exciting, secure and well-paid job. However, for me as a handicapped person it is also clear that it will be a mainly sedentary work.

I want to study chemistry.

Due to my internship in a laboratory, I already experienced the work as a chemist. Therefore I know that one will have a lot of responsibility by doing experiments and interpreting as well as recording the results right. I really believe that the work in a laboratory could offer a healthy balance between standing activity while doing tests and sitting activity while recording the results.

3 World Health Organization: Disability and health. In: who.int. 16 January 2018. <https://www.who.int/news-room/fact-sheets/detail/disability-and-health>. [01.06.2019.]
Stiftung MyHandicap gemeinnützige GmbH: Behinderung: Letzlich nur eine Definitionssache?. In: myhandicap. <https://www.myhandicap.de/recht-behinderung/begriffe/behinderung/who/>. [01.06.2019.]

4 Madel, Andreas: Arten von Behinderungen. In: barrierefreie-immobilie. <https://www.barrierefreie-immobilie.de/barrierefreies-leben/arten-von-behinderungen/>. [01.06.2019.]

3.1 Faculty related requirements

First of all, a suitable university should be well-known for its faculty of science. Due to the high popularity I believe that one could have better job opportunities in international companies. During my studies I would appreciate the possibility to do a term abroad. Get to know a different culture and improving one's language skills is important. Especially the use of English is very important since it is known as a global language and necessary for scientific work all over the world. Moreover, I am curious if the university offers scholarships for students to grant them financial support as well as social support such as individual study counselling or support for disabled persons.

3.2 Campus related requirements

The university's campus should have good accessibility which enables to move freely within the campus. Dependent on my personal health condition all stairs have to have banisters. Lifts are not necessary, but lifts could be a relief by climbing many floors. In addition, I would prefer if all the facilities of the university are combined on one campus. The short distance between the buildings leads to an easy change concerning the different locations of lectures.

3.3 City related requirements

The city provides easy accessibility by public transports. Whether it is a large or small city it can be difficult to find parking lots when using the car. However, car parks and stations of public transport should be closely connected to the university and the living space. Regarding the living situation, it should be a student room in the ground floor or a student room which can be easily reached by elevator.

If the university and the city meet the enumerated requirements it would guarantee an independent life like every non-disabled student to me.

4 Heinrich-Heine-University Düsseldorf

In 1965, the former “Academy of Practical Medicine” was converted into “University Düsseldorf”. It was renamed in “Heinrich-Heine-University” in 1988. The University was firstly constituted with a Faculty of Medicine. In the following period of time, a Faculty of Mathematics and Natural Sciences, a Faculty of Arts and Humanities, a Faculty of Business Administration and Economics and a Faculty of Law were established. These five faculties are combined on one campus, which also includes a University Hospital, a University and State Library, specialist libraries and a Botanical Garden.

Therefore the university describes itself as an university of short routes which makes life easier for researchers and students. In 2015, about 35,000 students could choose between 73 study programmes.⁵

4.1 Faculty related analysis

The Faculty of Mathematics and Natural Sciences is the largest faculty of the Heinrich-Heine-University with approximately 12,600 students. It primarily focuses on physics and life sciences. Moreover the faculty is involved into nine European research programmes.⁶

With 19 professors and about 1200 students, the department of chemistry is one of the important fields at the faculty for Mathematics and Natural Sciences. In addition, the successful cooperation with “Forschungszentrum Jülich”- one of the largest research organizations in Europe – combines the specialist expertise of individual organizations.⁷

Furthermore, the department of chemistry enables students to do a term or a

5 Heinrich-Heine-Universität Düsseldorf: One campus. Five faculties. A thousand opportunities. In: hhu. https://www.uni-duesseldorf.de/home/fileadmin/redaktion/Oeffentliche_Medien/Presse/Pressemeldungen/Dokumente/HHU_Image_GB_Okt_2015_Web.pdf. [01.06.2019.]

6 Heinrich-Heine-Universität Düsseldorf: One campus. Five faculties. A thousand opportunities. In: hhu. https://www.uni-duesseldorf.de/home/fileadmin/redaktion/Oeffentliche_Medien/Presse/Pressemeldungen/Dokumente/HHU_Image_GB_Okt_2015_Web.pdf. [01.06.2019.]

7 Heinrich-Heine-Universität Düsseldorf: The department of chemistry at the Faculty for Natural Sciences and Mathematics. In: chemie.hhu. <http://www.chemie.hhu.de/en.html>. [01.06.2019.]

training period abroad. While the Erasmus programme of the European Union promotes the exchange of students at partner universities in Italy, Finland, France, Poland, Romania, Sweden, Switzerland and Spain, students are responsible to look for an internship in an international company. Terms and training periods abroad from 2-12 months are promoted by the Erasmus programme. The amount of funding is dependent on the country and the length of stay.⁸

Students of Heinrich-Heine-University can apply for a variety of scholarships. One can find scholarships suitable for every stage of studies and thematic focus. Most of the scholarships are provided by foundations who collaborate with the University.⁹

Social workers of the advisory office of the commissioner for students with disabilities and chronic diseases give advice concerning financial aid or company on the campus.¹⁰

4.2 Campus related analysis

The department of chemistry can be found in the south of the campus in the 25/26 buildings (compare annex Graphics 3).

The “Essensausgabe Süd” which can be reached by lift and the “Café Math-Nat” which is accessible by four steps are closely connected. In comparison to these restaurants, the main canteen (building 21.11 Mensa) has the largest distance from the chemical department. However, the canteen also includes an

8 Heinrich-Heine-Universität Düsseldorf: Studienaufenthalt im Ausland. In: chemie.hhu. <http://www.chemie.hhu.de/verborgen/studium-und-lehre/studieren-im-ausland/studieren-im-ausland.html>. [01.06.2019.]

Heinrich-Heine-Universität Düsseldorf: Foreign training period. In: math-nat-fak.hhu. <http://www.math-nat-fak.hhu.de/en/faculty-international/erasmus/outgoings/foreign-training-period.html>. [01.06.2019.]

Heinrich-Heine-Universität Düsseldorf: Fact Sheet Auslandspraktikum mit Erasmus+. In: uni-duesseldorf. https://www.uni-duesseldorf.de/home/fileadmin/redaktion/ZUV/Dezernat_1/International_Office/Fact_Sheet_SMP_2018-19.pdf. [01.06.2019.]

9 Heinrich-Heine-Universität Düsseldorf: Stipendienkompass 2018/19 der Heinrich-Heine-Universität Düsseldorf. In: uni-duesseldorf. https://www.uni-duesseldorf.de/home/fileadmin/redaktion/ZUV/Zentrale_Uni_Foerderung/2019/20190211_Stipendienkompass_HHU.pdf. [01.06.2019.]

10 Heinrich-Heine-Universität Düsseldorf: Advisory office of the commissioner for students with disabilities and chronic diseases. In: uni-duesseldorf. <https://www.uni-duesseldorf.de/home/en/about-hhu/university-facilities/commissioned-persons/homepage-commissioner-for-students-with-disabilities/overview/advisory-office-of-the-commissioner-for-students-with-disabilities-and-chronic-diseases.html>. [01.06.2019.]

elevator. The Union Library of Science and the University and State Library are fully accessible since lifts facilitate the change of floors. In addition, the University and State Library is one of the largest libraries in Germany. It has a range of about 2.5 million books and provides workplaces for 2000 students. The Botanical Garden which has a size of 80,000m² and a diversity of 5063 plant species is situated in the West and in close proximity to the chemical faculty. Main facilities such as canteens, libraries and the Botanical Garden can be found in short distance from the department of chemistry.¹¹

The 5 and 6 lecture theatres are closest to the chemical department. They may offer a barrier-free entrance but within the lecture halls there are stairs.

Moreover, the stairs have no banisters which complicates to move freely as a disabled person (compare annex Graphics 4 and Graphics 5).¹²

4.3 City related analysis

Regarding the university's connection to public transport, every bordering main traffic axis can be reached by bus or tram. Students receive a semester ticket in exchange for a certain amount. Disabled students - who have a disability certificate with a token to use public transportation for free – can reclaim the amount for the semester ticket. Moreover, disabled persons can get an internal parking permit. Disabled parking lots are spread all over the university's campus (compare annex Graphics 6).¹³

11 Heinrich-Heine-Universität Düsseldorf: One campus. Five faculties. A thousand opportunities. In: hhu. https://www.uni-duesseldorf.de/home/fileadmin/redaktion/Oeffentliche_Medien/Presse/Pressemeldungen/Dokumente/HHU_Image_GB_Okt_2015_Web.pdf. [01.06.2019.]

Franz, Matthias: BarriereFREI studieren. In: uni-duesseldorf. <https://www.uni-duesseldorf.de/home/fileadmin/redaktion/BBST/Dokumente/Infoheft.pdf>. [01.06.2019.]

12 Heinrich-Heine-Universität Düsseldorf: Barrierefreiheit der Hörsäle. In: uni-duesseldorf. <https://www.uni-duesseldorf.de/home/fileadmin/redaktion/BBST/Dokumente/HoersaallisteA4.pdf>. [01.06.2019.]

Heinrich-Heine-Universität Düsseldorf: Hörsäle der Heinrich-Heine-Universität Düsseldorf. <https://www.uni-duesseldorf.de/home/universitaet/strukturen/beauftragte-und-koordinierungsstellen/beauftragter-fuer-studierende-mit-behinderungen-und-chronischen-erkrankungen/service-und-angebote/barrierefreiheit-der-hoersaele-an-hhu-und-ukd.html>. [01.06.2019.]

13 Franz, Matthias: BarriereFREI studieren. In: uni-duesseldorf. <https://www.uni-duesseldorf.de/home/fileadmin/redaktion/BBST/Dokumente/Infoheft.pdf>. [01.06.2019.]

Heinrich-Heine-Universität Düsseldorf: Lage und Anreise. In: uni-duesseldorf.

<https://www.uni-duesseldorf.de/home/universitaet/weiterfuehrend/lageplan-und-anfahrt.html>. [01.06.2019.]

The facility “Studierendenwerk Düsseldorf” provides in total 4000 cheap apartments, single rooms and flat-sharing communities in several residential buildings. These are situated in Düsseldorf and its surrounding region. In Düsseldorf one can find two barrier-free housing locations in close proximity to the Heinrich-Heine-University (compare annex Graphics 7).¹⁴

A residential complex at “Universitätsstraße 1” has a central position since it is situated close to the main canteen on the campus. It offers four barrier-free single rooms which have a size of 34m². Rents are about 321€-381€.

The residential area at “Otto-Hahn-Straße 108-118” in the south of the University provides two barrier-free flats per three persons. Rents are 241€-281€. It is accessible by public transports. In addition, the campus is also reachable by walk or bike in a few minutes.¹⁵

5 RWTH University Aachen

The “Rheinisch-Westfälische Technische Hochschule” (RWTH) opened on 10th October 1870. At this time 223 students were taught by 32 teachers. Nowadays nine faculties are established focusing on sciences, engineering and technology. About 45,000 students can choose between 157 study programmes. RWTH aims to be one of the best Universities of science and technology in Europe. This will be measured by the reputation of its graduates, research networks and external funding to reach scientific goals.

RWTH is no campus university. Parts of the university are located in the city centre as well as in the Western suburbia of Aachen.¹⁶

14 Studierendenwerk Düsseldorf: Wohnanlagen. In: stw-d. <https://www.stw-d.de/studentisches-wohnen/wohnanlagen/>. [01.06.2019.]

15 Studierendenwerk Düsseldorf: Universitätsstraße 1. In: stw-d. <https://www.stw-d.de/studentisches-wohnen/wohnanlagen/universitaetsstrasse-1/>. [01.06.2019.]

Studierendenwerk Düsseldorf: Otto-Hahn-Straße 108-118. In: stw-d. <https://www.stw-d.de/studentisches-wohnen/wohnanlagen/otto-hahn-strasse-108-118/>. [01.06.2019.]

16 RWTH Aachen: Reputation. In: rwth-aachen. <https://www.rwth-aachen.de/cms/root/Die-RWTH/Profil/~eng/Reputation/?lidx=1>. [01.06.2019.]

Gersmann, Gudrun: Vorgeschichte und Gründung. In: archiv.rwth-aachen.

http://www.archiv.rwth-aachen.de/web/rea/Seite/geschichte_18.htm. [01.06.2019.]

Kuckartz, Hermann-Josef: Die RWTH aus anderer Perspektive. In: rwth-aachen.

https://www.rwth-aachen.de/global/show_document.asp?id=aaaaaaaaaliwv&download=1.

5.1 Faculty related requirements

Referring to the university ranking of the German business magazine "Wirtschaftswoche" RWTH ranks second in the field of science in 2018. In the yearly survey 500 recruiters of German companies are allowed to name an university which trains its graduates the best by regarding the individual needs of the enterprise.¹⁷

The Faculty of Mathematics, Computer Science and Natural Sciences is the largest faculty of the RWTH Aachen University with more than 120 professors and approximately 6000 students. It combines the five departments of mathematics, computer science, biology, physics and chemistry. These departments closely work with each other. Moreover, the faculty has a partnership with "Forschungszentrum Jülich".¹⁸

The chemical department aims to develop complex systems such as efficient syntheses and sustainable processes and to understand nuclear and molecular interdependencies on an experimental and theoretical level.¹⁹

Students of the department of chemistry have the possibility to spend two semesters at a partner university of the RWTH which is supported by the Erasmus programme of the European Union. It provides for instance exemptions from paying university fees or financial aid. Host universities with a chemical department can be found in Finland, France, Italy, Norway, the Netherlands, the United Kingdom, Switzerland and Spain.²⁰

RWTH Aachen is regularly involved in international research programmes. For instance, from 2013-2018 RWTH Aachen University was part of the AcalNet. This Aachen-California Network of Academic Exchange was financed by the German Federal Ministry of Education and Research (BMBF). Besides the

[01.06.2019.]

17 Dezernat 6.0 Planung, Entwicklung und Controlling der RWTH Aachen: Rankingreport 2018.

In: [rwth-aachen. https://www.rwth-aachen.de/global/show_document.asp?id=aaaaaaaaaafvl](https://www.rwth-aachen.de/global/show_document.asp?id=aaaaaaaaaafvl). [01.06.2019.]

18 RWTH Aachen: Faculty 1. In: [fb1.rwth-aachen. http://www.fb1.rwth-aachen.de/cms/Mathematik-Informatik-Naturwissenschaft/Die-Fakultaet/Profil/~bnkg/Fakultaet-1/?lidx=1](http://www.fb1.rwth-aachen.de/cms/Mathematik-Informatik-Naturwissenschaft/Die-Fakultaet/Profil/~bnkg/Fakultaet-1/?lidx=1). [01.06.2019.]

19 RWTH Aachen: Department of Chemistry. In: [fb1.rwth-aachen.de. http://www.fb1.rwth-aachen.de/cms/Mathematik-Informatik-Naturwissenschaft/Die-Fakultaet/Fachgruppen/~bnma/Chemie/?lidx=1](http://www.fb1.rwth-aachen.de/cms/Mathematik-Informatik-Naturwissenschaft/Die-Fakultaet/Fachgruppen/~bnma/Chemie/?lidx=1). [01.06.2019.]

20 RWTH Aachen: Erasmus-Studienaufenthalt. In: [chemie.rwth-aachen. http://www.chemie.rwth-aachen.de/cms/Chemie/Studium/Internationales/Outgoings/~qcry/Erasmus-Programm/](http://www.chemie.rwth-aachen.de/cms/Chemie/Studium/Internationales/Outgoings/~qcry/Erasmus-Programm/). [01.06.2019.]

University of California and the RWTH in Aachen, research institutions and industrial partners were involved in both regions, for example Lawrence Berkeley National Laboratory and Schlumberger-Doll Research in the United States and Forschungszentrum Jülich and CAT Catalytik Center in Germany.²¹ International research cooperation enable the funding of research stays as well as an exchange of students and researchers.

Students of RWTH Aachen University can apply for a range of scholarships. Some of the scholarships enable the participation of students in research projects. Most of the scholarships are offered by foundations cooperating with the university.²²

The commissioners for students with disabilities and chronic diseases offer support concerning questions of accessibility of campus, company in everyday life, scholarships and financial aid.²³

5.2 Campus related analysis

RWTH Aachen University consists of three major areas: "Campus Mitte", "Campus Melaten" and "Campus West". The university's main building exists since the laying of the foundation stone in 1865. It is located in "Campus Mitte" which means that this campus is the oldest one. RWTH expands "Campus Melaten" in the West of Aachen since 2009. In addition, since 2015 an expansion of "Campus West" leads to a connection between the university's parts in the west and in the city centre (compare annex Graphics 8). Once the construction works will be finished a research landscape of 2.5 km² will enable a close collaboration of companies, university- and research institutions. Due to cooperation of economy and science, it will be possible to deal with future topics such as Globalisation, climate- or demographic changes.²⁴

21 RWTH Aachen: The network. In: acalnet.com. <https://www.acalnet.com/en/the-network>. [01.06.2019.]

22 RWTH Aachen: Stipendienübersicht. In: rwth-aachen. <https://www.rwth-aachen.de/go/id/dyiv>. [01.06.2019.]

RWTH Aachen: Studierende in der Forschung. In: rwth-aachen. <https://www.rwth-aachen.de/cms/root/Studium/Im-Studium/~rms/Angebote-fuer-Studierende/> . [01.06.2019.]

23 RWTH Aachen: Beratung zum Thema Studium mit Behinderung und chronischer Erkrankung. In: rwth-aachen. <http://www.rwth-aachen.de/cms/root/Studium/Beratung-Hilfe/~ejj/Studium-mit-Handicap/>. [01.06.2019.]

24 RWTH Aachen Campus GmbH: Forschen. Lernen. Entwickeln. Leben.. In: rwth-campus.com. <https://www.rwth-campus.com/wp->

The buildings of the faculty of mathematics, computer science and natural sciences spread from an area in the city centre out to the "Melaten Campus" close to the university hospital.²⁵

This can be seen by regarding the location of chemical institutions. To give an example, institutions of inorganic and organic chemistry can be located at "Campus Mitte" but there is also a "Sammelbau" of chemistry in close proximity to the university hospital (compare annex Graphics 9). However, buildings of the chemical department include lecture theatres. The entrances of the lecture halls in the inorganic chemistry are barrier-free.²⁶

Moreover, RWTH has some large individual lecture theatres. For instance "Auditorium maximum" or "C.A.R.L – Central Auditorium of Research and Learning". These buildings are closely connected at the meeting point of "Campus Mitte" and "Campus West" (compare annex Graphics 9). "C.A.R.L" includes eleven lecture halls which have space for 4000 students. In the largest theatre about 1000 students can be taught.²⁷

Due to the fact that at least in one of the large lecture theatres are stairs with missing banisters it will be difficult to move freely without help (compare annex Graphics 10).

Several cafeterias can be found on RWTH's large-scale territory. Every cafeteria is accessible by disabled students. The library of the University which focuses on natural sciences is located in the central area and has a barrier-free entrance.²⁸

content/uploads/2015/01/RWTH_Aachen_Campus_Broschuere_DE.pdf. [01.06.2019.]

Gersmann, Gudrun: Vorgeschichte und Gründung. In: archiv.rwth-aachen.

http://www.archiv.rwth-aachen.de/web/rea/Seite/geschichte_18.htm. [01.06.2019.]

25 RWTH Aachen: Faculty 1. In: fb1.rwth-aachen. <http://www.fb1.rwth-aachen.de/cms/Mathematik-Informatik-Naturwissenschaft/Die-Fakultaet/Profil/~bnkg/Fakultaet-1/?lidx=1>. [01.06.2019.]

26 RWTH Aachen: Gebäude. In: chemie.rwth-aachen. <http://www.chemie.rwth-aachen.de/cms/Chemie/Footer/Kontakt-und-Lageplaene/~sbas/Gebaeude/?search=chemie&page=>. [01.06.2019.]

Kuckartz, Hermann-Josef: Die RWTH aus anderer Perspektive. In: rwth-aachen.

https://www.rwth-aachen.de/global/show_document.asp?id=aaaaaaaaaaliwv&download=1. [01.06.2019.]

27 RWTH Aachen: New Lecture Hall Complex named: C.A.R.L.. In: rwth-aachen.

<http://www.rwth-aachen.de/cms/root/Die-RWTH/Aktuell/Pressemitteilungen/Februar/~hmcd/Neues-Hoersaalzentrum-heisst-C-A-R-L/?lidx=1>. [01.06.2019.]

28 Kuckartz, Hermann-Josef: Die RWTH aus anderer Perspektive. In: rwth-aachen.

https://www.rwth-aachen.de/global/show_document.asp?id=aaaaaaaaaaliwv&download=1. [01.06.2019.]

All in all, one can say that the distances of important buildings can vary from a short to a large distance dependent on one's position in the city and the distribution of buildings.

5.3 City related analysis

RWTH University is connected by train and various bus lines. "Aachen West" is the local train station from where "Campus Mitte" can be reached by foot. To arrive at "Campus Melaten" one has to take the bus. The station has a non-stop connection with Mönchengladbach. However, it is not barrier-free. RWTH is fully accessible by bus but bus rides can last up to twenty minutes to reach the different campuses. Handicapped students - who have a disability certificate with a token to use public transportation for free – can reclaim the amount for the semester ticket.²⁹

In addition, the university offers the possibility to get a parking permit. A parking permit costs nine euros per month and has a duration of six months. The buildings at the campus are surrounded by parking zones which one can use with a permit (compare annex Graphics 11).³⁰

The facility "Studierendenwerk Aachen" provides cheap residential space in the city. In total there are two accessible residential buildings. One has a central location since the walk to the train station "Aachen West" takes ten minutes. This residential complex includes an elevator and one barrier-free apartment with a size of 46m² and a prize of 367€. Another accessible dormitory with six barrier-free apartments can be found in a southern region of Aachen. An apartment has a size of 24m² and costs 287€ per month plus electricity. Compared to the other housing location the distance to the university is larger (compare annex Graphics 9). Moreover the walk to the next bus stop takes three minutes.³¹

29 RWTH Aachen: Accessibility at RWTH Aachen. In: www.rwth-aachen.de/cms/root/Die-RWTH/Mobilitaet/~jgtm/Erreichbarkeit/?lidx=1. [01.06.2019.]

30 RWTH Aachen: Parking. In: www.rwth-aachen.de/cms/root/Die-RWTH/Mobilitaet/~jgyj/Parkraumbewirtschaftung/?lidx=1. [01.06.2019.]

31 Studierendenwerk Aachen: Finding a suitable apartment. In: [studierendenwerk-aachen.de/en/housing/residence-halls.html](https://www.studierendenwerk-aachen.de/en/housing/residence-halls.html). [01.06.2019.]

6 Comparison of Universities

In the following, I will compare RWTH Aachen University and Heinrich-Heine-University based on the results of the analysis. I will decide if the university's and city's standards meet my expectations as defined in line with my personal needs.

Therefore an evaluation system consists of three evaluation levels (compare annex Graphics 13). Every aspect is ranked regarding its fulfillment of my personal expectations. Each evaluation level provides a certain amount of points. Zero points are rated if a requirement does not meet my expectations. Contrary if the requirement is fulfilled two points are given. A neutral evaluation provides one point. This means an aspect affects my evaluation neither positive nor negative. The given points for each requirement will help to compare the universities. In addition both universities will have an individual score which supports my decision concerning which university could be more suitable for me.

My evaluation shows that in my opinion some criteria have the same quality at both universities.

Comparable aspects of high quality are the importance of the faculty for science, barrier-free entrances and parking at the university's terrain. Both universities are part of several research projects and cooperate with the regional research institution "Forschungszentrum Jülich". Moreover, they try to guarantee accessible entrances to public buildings such as cafeterias or libraries which are located near parking lots. Furthermore, individual study counselling for disabled students is available as well as a large range of scholarships for students.

On the other hand, mobility within lecture theatres does not meet my demands since – according to the analysis – there are no banisters in lecture halls in Düsseldorf neither Aachen.

The enumerated requirements of equal quality will be ignored since they do not affect the comparison between RWTH Aachen University and Heinrich-Heine-University.

One of the key aspects of my decision about the preferred university is the

internationality regarding the possibility to do a term abroad. The Erasmus programme is promoted by each of the two universities. However, only the department of chemistry in Aachen has a partner university in the United Kingdom which would be my favored destination. RWTH is also associated with other exchange programmes such as ACalNet.

Another important difference comparing the universities is the extent of the campus. Whereas RWTH Aachen University consists of three campuses measuring 2.5 km²- Heinrich-Heine-University combines all its buildings on one campus. From my point of view short routes will ease everyday life in Düsseldorf.

This is supported by the location of the dormitory. While one accessible residential complex is situated at the campus of Heinrich-Heine-University the other can be found in close proximity to the university.

In Düsseldorf, public transports provide many access points to the campus while the central station in Aachen is not accessible for handicapped persons. All in all, based on the evaluation RWTH Aachen University reached a total score of 15 points. Heinrich-Heine-University reached a total score of 20 points. I believe that Heinrich-Heine-University will be the better choice for me as a handicapped person since one campus has accessible public buildings and good accessibility by public transportation which guarantees short routes.

7 Conclusion

While working on this term paper I figured some points out which could be improvable to give students with walking difficulties increased support.

First from my point of view, the most serious problem at the universities is the absence of banisters within lecture halls. This problem could be solved by the installation of handrails. Moreover, I think it should be invested in the construction of accessible living space by comparing the amount of barrier-free apartments provided in one city and the actual amount of disabled students.

The share of handicapped students can be derived from the social surveys of Deutsches Studentenwerk in cooperation with the Federal Ministry of Education

and Research. These surveys are limited to the share of students who feel impaired by their disability. In the 21st and latest social survey published in 2016, 11% of asked students indicated to have limitations caused by their disability. Projected on a basic value of 2.37 million German students, about 264.000 students are impaired. 10% of this amount have motor impairments. Consequently, in 2016, 26.400 students had impairments caused by mobility difficulties.³²

To offer disabled students equal participation in education in the future, Germany is part of the UN-Behindertenrechtskonvention which is effective since 3.May.2008.³³

“Die Vertragsstaaten anerkennen das Recht von Menschen mit Behinderungen auf Bildung. Um dieses Recht ohne Diskriminierung und auf der Grundlage der Chancengleichheit zu verwirklichen, gewährleisten die Vertragsstaaten ein integratives Bildungssystem auf allen Ebenen und lebenslanges Lernen”
(Artikel 24 Abs. 1 UN-BRK)³⁴

The resolution focuses on accessibility, equal opportunities and equal treatment.

To reach this aim, I think it is very important to have a close cooperation between universities and disabled students. I am sure that improvement will only be achieved if disabled students call attention to possible impairments.

32 Bundesministerium für Bildung und Forschung: Die wirtschaftliche und soziale Lage der Studierenden in Deutschland 2016. In: sozialerhebung.
http://www.sozialerhebung.de/download/21/Soz21_hauptbericht.pdf. [01.06.2019.]

33 Praetor Intermedia UG: Übereinkommen über die Rechte von Menschen mit Behinderungen. In: behindertenrechtskonvention. <https://www.behindertenrechtskonvention.info/>. [01.06.2019.]

34 Praetor Intermedia UG: Bildung. In: behindertenrechtskonvention. <https://www.behindertenrechtskonvention.info/bildung-3907/>. [01.06.2019.]

List of references

Internet sources

- Bundesministerium für Bildung und Forschung: Die wirtschaftliche und soziale Lage der Studierenden in Deutschland 2016. In: sozialerhebung. http://www.sozialerhebung.de/download/21/Soz21_hauptbericht.pdf. [01.06.2019.]
- Dezernat 6.0 Planung, Entwicklung und Controlling der RWTH Aachen: Rankingreport 2018. In: rwth-aachen. https://www.rwth-aachen.de/global/show_document.asp?id=aaaaaaaaaaoofvl. [01.06.2019.]
- Franz, Matthias: BarriereFREI studieren. In: uni-duesseldorf. <https://www.uni-duesseldorf.de/home/fileadmin/redaktion/BBST/Dokumente/Infoheft.pdf>. [01.06.2019.]
- Gersmann, Gudrun: Vorgeschichte und Gründung. In: archiv.rwth-aachen. http://www.archiv.rwth-aachen.de/web/rea/Seite/geschichte_18.htm. [01.06.2019.]
- Heinrich-Heine-Universität Düsseldorf: Advisory office of the commissioner for students with disabilities and chronic diseases. In: uni-duesseldorf. <https://www.uni-duesseldorf.de/home/en/about-hhu/university-facilities/commissioned-persons/homepage-commissioner-for-students-with-disabilities/overview/advisory-office-of-the-commissioner-for-students-with-disabilities-and-chronic-diseases.html>. [01.06.2019.]
- Heinrich-Heine-Universität Düsseldorf: Barrierefreiheit der Hörsäle. In: uni-duesseldorf. <https://www.uni-duesseldorf.de/home/fileadmin/redaktion/BBST/Dokumente/HoersaallisteA4.pdf>. [01.06.2019.]
- Heinrich-Heine-Universität Düsseldorf: Fact Sheet Auslandspraktikum mit Erasmus+. In: uni-duesseldorf. https://www.uni-duesseldorf.de/home/fileadmin/redaktion/ZUV/Dezernat_1/International_Office/Fact_Sheet_SMP_2018-19.pdf. [01.06.2019.]
- Heinrich-Heine-Universität Düsseldorf: Foreign training period. In: math-nat-fak.hhu. <http://www.math-nat-fak.hhu.de/en/faculty-international/erasmus/outgoings/foreign-training-period.html>. [01.06.2019.]
- Heinrich-Heine-Universität Düsseldorf: Hörsäle der Heinrich-Heine-Universität Düsseldorf. <https://www.uni-duesseldorf.de/home/universitaet/strukturen/beauftragte-und-koordinierungsstellen/beauftragter-fuer-studierende-mit-behinderungen-und-chronischen-erkrankungen/service-und-angebote/barrierefreiheit-der-hoersaele-an-hhu-und-ukd.html>. [01.06.2019.]
- Heinrich-Heine-Universität Düsseldorf: Lage und Anreise. In: uni-duesseldorf. <https://www.uni-duesseldorf.de/home/universitaet/weiterfuehrend/lageplan-und->

anfahrt.html. [01.06.2019.]

- Heinrich-Heine-Universität Düsseldorf: One campus. Five faculties. A thousand opportunities. In: hhu. https://www.uni-duesseldorf.de/home/fileadmin/redaktion/Oeffentliche_Medien/Presse/Pressemeldungen/Dokumente/HHU_Image_GB_Okt_2015_Web.pdf. [01.06.2019.]
- Heinrich-Heine-Universität Düsseldorf: Stipendienkompass 2018/19 der Heinrich-Heine-Universität Düsseldorf. In: uni-duesseldorf. https://www.uni-duesseldorf.de/home/fileadmin/redaktion/ZUV/Zentrale_Uni_Foerderung/2019/20190211_Stipendienkompass_HHU.pdf. [01.06.2019.]
- Heinrich-Heine-Universität Düsseldorf: Studienaufenthalt im Ausland. In: chemie.hhu. <http://www.chemie.hhu.de/verborgen/studium-und-lehre/studieren-im-ausland/studieren-im-ausland.html>. [01.06.2019.]
- Heinrich-Heine-Universität Düsseldorf: The department of chemistry at the Faculty for Natural Sciences and Mathematics. In: chemie.hhu. <http://www.chemie.hhu.de/en.html>. [01.06.2019.]
- Kuckartz, Hermann-Josef: Die RWTH aus anderer Perspektive. In: rwth-aachen. https://www.rwth-aachen.de/global/show_document.asp?id=aaaaaaaaaaliwv&download=1. [01.06.2019.]
- Madel, Andreas: Arten von Behinderungen. In: barrierefreie-immobilie. <https://www.barrierefreie-immobilie.de/barrierefreies-leben/arten-von-behinderungen/>. [01.06.2019.]
- Praetor Intermedia UG: Bildung. In: behindertenrechtskonvention. <https://www.behindertenrechtskonvention.info/bildung-3907/>. [01.06.2019.]
- Praetor Intermedia UG: Übereinkommen über die Rechte von Menschen mit Behinderungen. In: behindertenrechtskonvention. <https://www.behindertenrechtskonvention.info/>. [01.06.2019.]
- RWTH Aachen: Accessibility at RWTH Aachen. In: rwth-aachen. <https://www.rwth-aachen.de/cms/root/Die-RWTH/Mobilitaet/~jgtm/Erreichbarkeit/?lidx=1>. [01.06.2019.]
- RWTH Aachen: Beratung zum Thema Studium mit Behinderung und chronischer Erkrankung. In: rwth-aachen. <http://www.rwth-aachen.de/cms/root/Studium/Beratung-Hilfe/~eji/Studium-mit-Handicap/>. [01.06.2019.]
- RWTH Aachen: Department of Chemistry. In: fb1.rwth-aachen.de. <http://www.fb1.rwth-aachen.de/cms/Mathematik-Informatik-Naturwissenschaft/Die-Fakultaet/Fachgruppen/~bnma/Chemie/?lidx=1>. [01.06.2019.]
- RWTH Aachen: Erasmus-Studienaufenthalt. In: chemie.rwth-aachen. <http://www.chemie.rwth->

aachen.de/cms/Chemie/Studium/Internationales/Outgoings/~qcry/Erasmus-Programm/. [01.06.2019.]

- RWTH Aachen: Faculty 1. In: fb1.rwth-aachen. <http://www.fb1.rwth-aachen.de/cms/Mathematik-Informatik-Naturwissenschaft/Die-Fakultaet/Profil/~bnkg/Fakultaet-1/?lidx=1>. [01.06.2019.]
- RWTH Aachen: Gebäude. In: chemie.rwth-aachen. <http://www.chemie.rwth-aachen.de/cms/Chemie/Footer/Kontakt-und-Lageplaene/~sbas/Gebaeude/?search=chemie&page=>. [01.06.2019.]
- RWTH Aachen: New Lecture Hall Complex named: C.A.R.L.. In: rwth-aachen. <http://www.rwth-aachen.de/cms/root/Die-RWTH/Aktuell/Pressemitteilungen/Februar/~hmcd/Neues-Hoersaalzentrum-heisst-C-A-R-L/?lidx=1>. [01.06.2019.]
- RWTH Aachen: Parking. In: rwth-aachen. <https://www.rwth-aachen.de/cms/root/Die-RWTH/Mobilitaet/~jgyj/Parkraumbewirtschaftung/?lidx=1>. [01.06.2019.]
- RWTH Aachen: Reputation. In: rwth-aachen. <https://www.rwth-aachen.de/cms/root/Die-RWTH/Profil/~eng/Reputation/?lidx=1>. [01.06.2019.]
- RWTH Aachen: Stipendienübersicht. In: rwth-aachen. <https://www.rwth-aachen.de/go/id/dyiv>. [01.06.2019.]
- RWTH Aachen: Studierende in der Forschung. In: rwth-aachen. <https://www.rwth-aachen.de/cms/root/Studium/Im-Studium/~rms/Angebote-fuer-Studierende/>. [01.06.2019.]
- RWTH Aachen: The network. In: acalnet.com. <https://www.acalnet.com/en/the-network>. [01.06.2019.]
- RWTH Aachen Campus GmbH: Forschen. Lernen. Entwickeln. Leben.. In: rwth-campus.com. https://www.rwth-campus.com/wp-content/uploads/2015/01/RWTH_Aachen_Campus_Broschuere_DE.pdf. [01.06.2019.]
- Stiftung MyHandicap gemeinnützige GmbH: Behinderung: Letzlich nur eine Definitionssache?. In: myhandicap. <https://www.myhandicap.de/recht-behinderung/begriffe/behinderung/who/>. [01.06.2019.]
- Studierendenwerk Aachen: Finding a suitable apartment. In: studierendenwerk-aachen. <https://www.studierendenwerk-aachen.de/en/housing/residence-halls.html>. [01.06.2019.]
- Studierendenwerk Düsseldorf: Otto-Hahn-Straße 108-118. In: stw-d. <https://www.stw-d.de/studentisches-wohnen/wohnanlagen/otto-hahn-strasse-108-118/>. [01.06.2019.]

- Studierendenwerk Düsseldorf: Universitätsstraße 1. In: stw-d. <https://www.stw-d.de/studentisches-wohnen/wohnanlagen/universitaetsstrasse-1/>. [01.06.2019.]
- Studierendenwerk Düsseldorf: Wohnanlagen. In: stw-d. <https://www.stw-d.de/studentisches-wohnen/wohnanlagen/>. [01.06.2019.]
- Wasmund,Steffen: § 2 SGB IX Begriffsbestimmungen. In: sozialgesetzbuch-sgb. <https://www.sozialgesetzbuch-sgb.de/sgbix/2.html>. [01.06.2019.]
- World Health Organization: Disability and health. In: who.int. 16 January 2018. <https://www.who.int/news-room/fact-sheets/detail/disability-and-health>. [01.06.2019.]

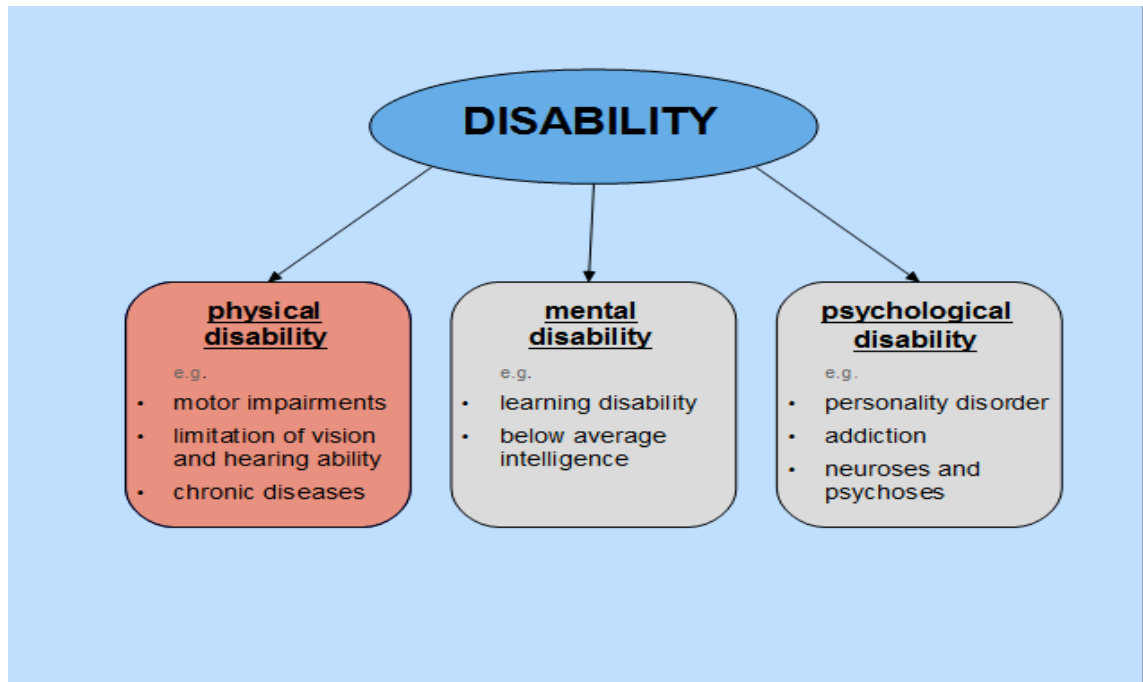
Image sources

- Franz, Matthias: Hörsaal 5K Treppe rechts. In: uni-duesseldorf. https://www.uni-duesseldorf.de/home/index.php?eID=tx_cms_showpic&file=36720&md5=d39c962424ec8324abaff3ca5cd8d1168b9a5ffd¶meters%5B0%5D=YTo0OntzOjU6IndpZHRoljtzOjU6IjEwMjRtIjtzOjY6ImhlaWdodCI7czo0Oil2¶meters%5B1%5D=MDBtIjtzOjY6ImJvZHIUYWciO3M6NDE6Ijxib2R5IHNoeWxlPSJtYXJnaW46MDsg¶meters%5B2%5D=YmFja2dyb3VuZDojZmZmOyl%2BIjtzOjQ6IndyYXAiO3M6Mzc6IjxhIGhyZWY9Imph¶meters%5B3%5D=dmFzY3JpcHQ6Y2xvc2UoKTsiPiB8IDwvYT4iO30%3D. [01.06.2019.]
- Franz, Matthias: Hörsaal 6C hinten. In: uni-duesseldorf. https://www.uni-duesseldorf.de/home/index.php?eID=tx_cms_showpic&file=37025&md5=0f98de6fef4aed51a5fa22036988430c2d4df22¶meters%5B0%5D=YTo0OntzOjU6IndpZHRoljtzOjU6IjEwMjRtIjtzOjY6ImhlaWdodCI7czo0Oil2¶meters%5B1%5D=MDBtIjtzOjY6ImJvZHIUYWciO3M6NDE6Ijxib2R5IHNoeWxlPSJtYXJnaW46MDsg¶meters%5B2%5D=YmFja2dyb3VuZDojZmZmOyl%2BIjtzOjQ6IndyYXAiO3M6Mzc6IjxhIGhyZWY9Imph¶meters%5B3%5D=dmFzY3JpcHQ6Y2xvc2UoKTsiPiB8IDwvYT4iO30%3D. [01.06.2019.]
- Heinrich-Heine-Universität Düsseldorf: Heinrich-Heine-Universität Düsseldorf, Stabsstelle Veranstaltungen und Marketing-Service, Stand Juli 2018. In: uni-duesseldorf. https://www.uni-duesseldorf.de/home/fileadmin/redaktion/Oeffentliche_Medien/Presse/Pressemeldungen/Dokumente/HHU_Campusplan_Juli_2018.pdf. [01.06.2019.]
- RWTH Aachen: Parkzone Mitte. In: rwth-aachen. <http://www.rwth-aachen.de/cms/root/Die-RWTH/Mobilitaet/~jgyj/Parkraumbewirtschaftung/>. [01.06.2019.]
- RWTH Aachen Campus GmbH: Campus GmbH/Städteregion Aachen. In: rwth-campus. <https://www.rwth-campus.com/ueber-uns/>. [01.06.2019.]
- Winandy, Peter: C.A.R.L. In: rwth-aachen. <http://www.rwth-aachen.de/cms/root/Die-RWTH/Aktuell/~btoj/Die-RWTH-Aachen-in-Bildern/>. [01.06.2019.]

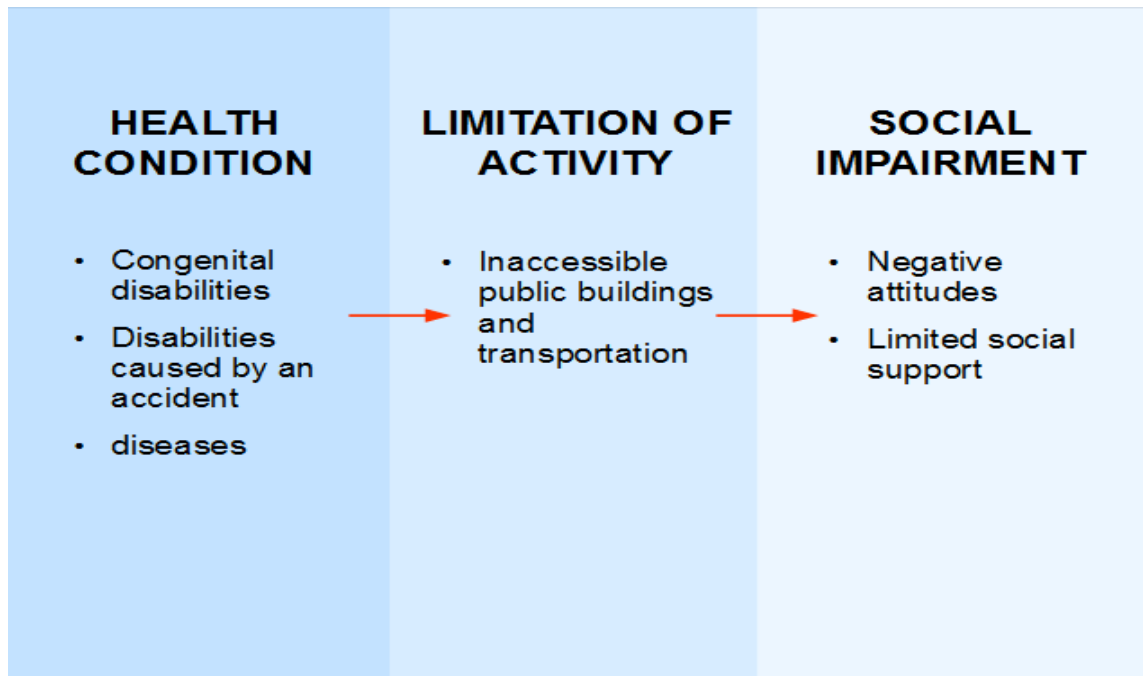
Annex

Graphics 1: Kinds of disabilities	25
Graphics 2: Courses and effects of a disability	25
Graphics 3: Map 1 of Heinrich-Heine-University	26
Graphics 4: Lecture theatre 5K	27
Graphics 5: Lecture theatre 6C	27
Graphics 6: Map 2 of Heinrich-Heine-University	27
Graphics 7: Housing situation in Düsseldorf	29
Graphics 8: Map 1 of RWTH Aachen University	30
Graphics 9: Map 2 of RWTH Aachen University	31
Graphics 10: Lecture theatre C.A.R.L	32
Graphics 11: Parking situation at RWTH Aachen University	32
Graphics 12: Personal evaluation	33

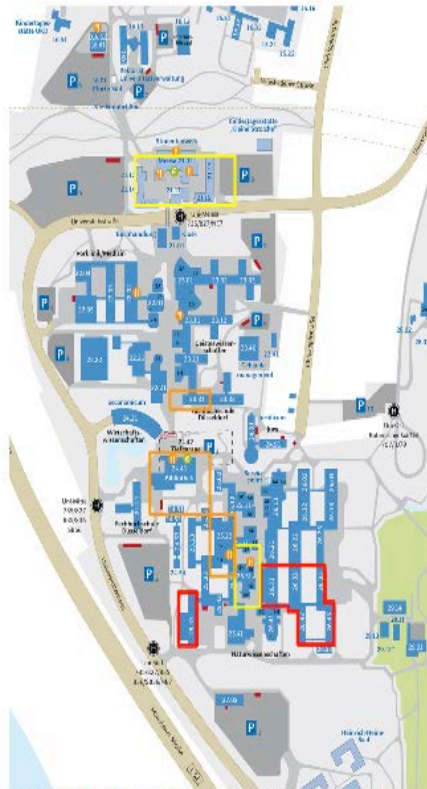
Graphics 1: Kinds of disabilities



Graphics 2: Courses and effects of a disability




Graphics 3: Map 1 of Heinrich-Heine-University



http://www.chemie.hhu.de/fileadmin/redaktion/Oeffentl.che_Medien/Karten-Anfahrtspläne-HHU/Fakultäten/MNF/Chemie/lage_chemie.png

 Department of Chemistry

 Canteens and Cafeterias

- 25.21 Essensausgabe Süd and Café Math-Nat


- 21.11 Mensa

 Libraries

- 24.41 Universitäts- und Landesbibliothek

- 23.31 Fachbereichsbibliothek

- 25.22 Verbundbibliothek Naturwissenschaften

 Botanical Garden

Graphics 4: Lecture theatre 5K



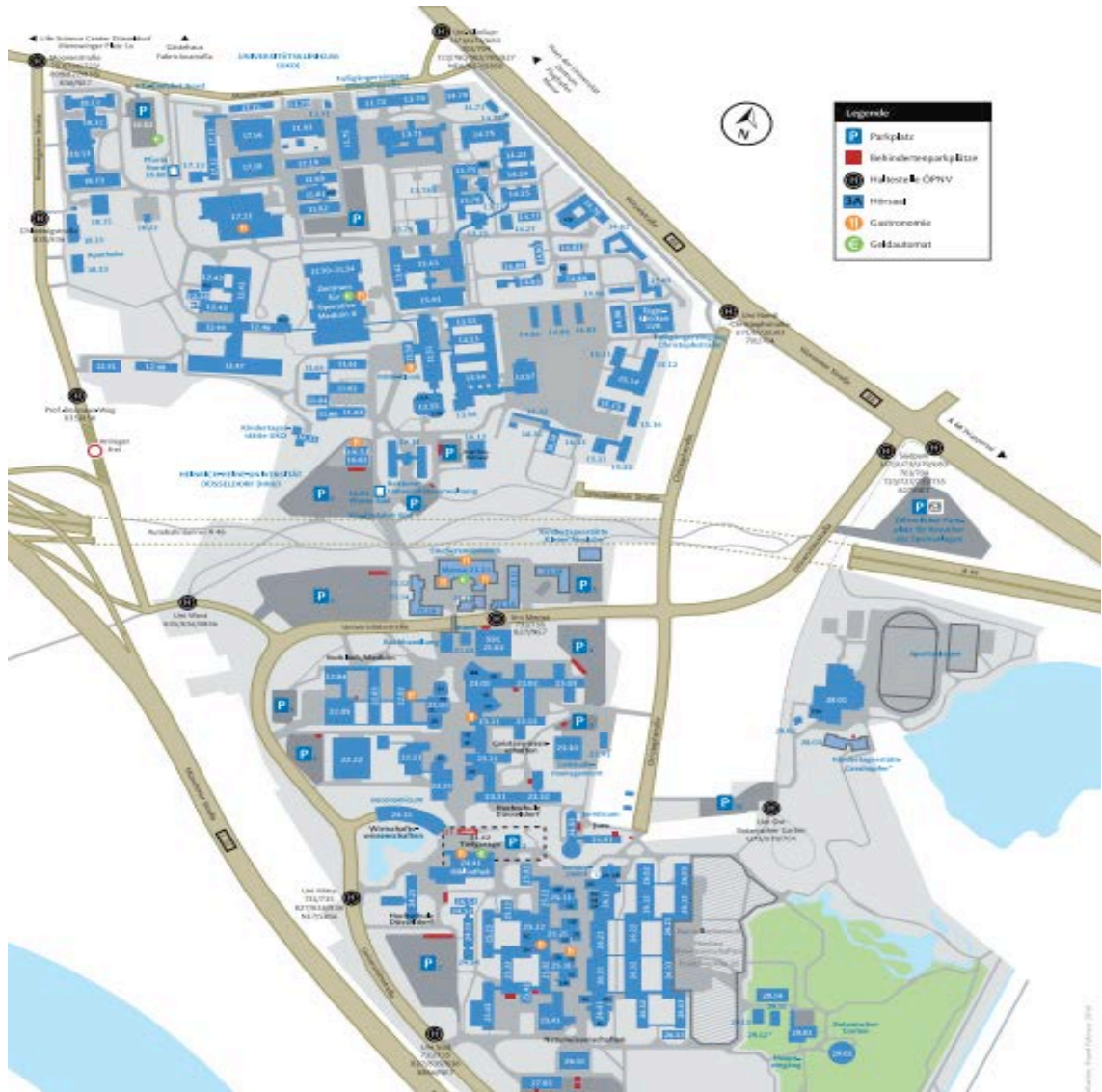
Franz, Matthias: Hörsaal 5K Treppe rechts. In: uni-duesseldorf. https://www.uni-duesseldorf.de/home/index.php?eID=tx_cms_showpic&file=36720&md5=d39c962424ec8324abaff3ca5cd8d1168b9a5ffd¶meters%5B0%5D=YTo0OntzOjU6IndpZHRoljtzOjU6ljEwMj

Graphics 5: Lecture theatre 6C



Franz, Matthias: Hörsaal 6C hinten. In: uni-duesseldorf. https://www.uni-duesseldorf.de/home/index.php?eID=tx_cms_showpic&file=37025&md5=0f98de6fef4aed51a5fa22036988430c2dddf22¶meters%5B0%5D=YTo0OntzOjU6IndpZHRoljtzOjU6ljEwMjRtljtzOjY6ImhlaWdodCI7czo0OiI2¶meters%5B1%5D=MDBtljtzOjY6ImhlaWdodCI7czo0OiI2¶meters%5B2%5D=YmFja2dyb3VuZDojZmZmOyl%2BljtzOjY6ImhlaWdodCI7czo0OiI2¶meters%5B3%5D=dmFzY3JpcHQ6Y2xvc2UoKtSiPiB8IDwvYT4iO30%3D. [01.06.2019.]


Graphics 6: Map 2 of Heinrich-Heine-University



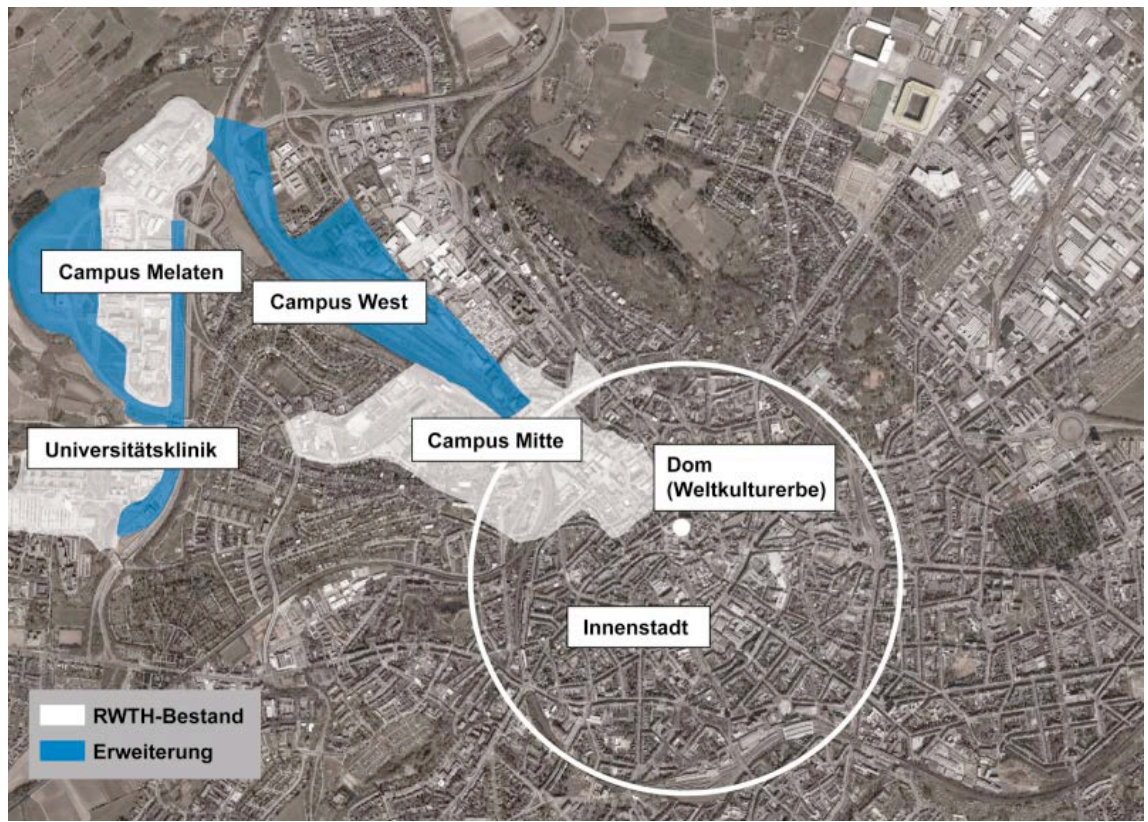
Heinrich-Heine-Universität Düsseldorf: Heinrich-Heine-Universität Düsseldorf, Stabsstelle Veranstaltungen und Marketing-Service, Stand Juli 2018. In: uni-duesseldorf. https://www.uni-duesseldorf.de/home/fileadmin/redaktion/Oeffentliche_Medien/Presse/Pressemeldungen/Dokumente/HHU_Campusplan_Juli_2018.pdf. [01.06.2019.]

Graphics 7: Housing situation in Düsseldorf



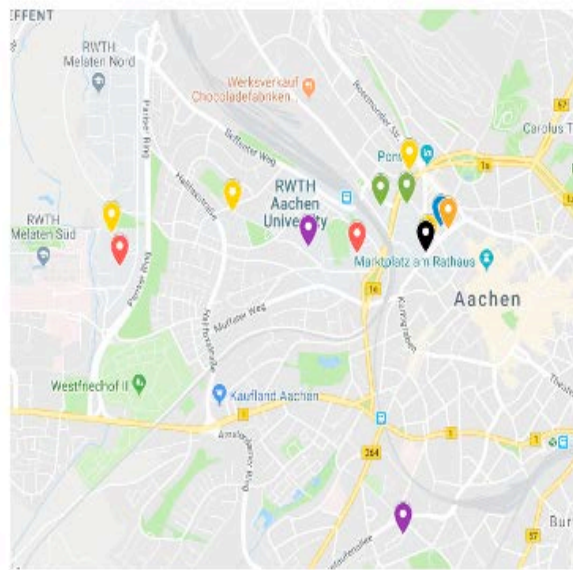
 Barrier-free student apartments in Düsseldorf

Graphics 8: Map 1 of RWTH Aachen University



RWTH Aachen Campus GmbH: Campus GmbH/Städtereion Aachen. In: rwth-campus.
<https://www.rwth-campus.com/ueber-uns/>. [01.06.2019.]

Graphics 9: Map 2 of RWTH Aachen University



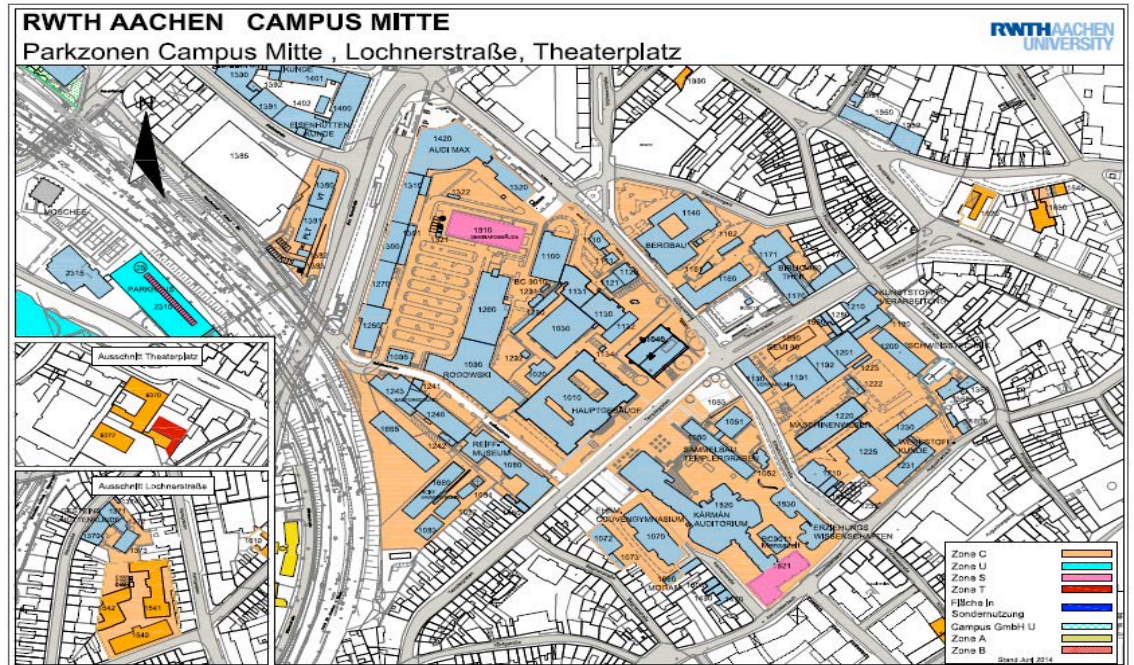
- Department of Chemistry
- Faculty of Mathematics, Computer Science and Natural Sciences
- Main building
- Canteens and Cafeterias
- University Library
- Large lecture theatres
- Barrier-free student apartments in Aachen

Graphics 10: Lecture theatre C.A.R.L



Winandy, Peter: C.A.R.L. In: rwth-aachen. <http://www.rwth-aachen.de/cms/root/Die-RWTH/Aktuell/~btoj/Die-RWTH-Aachen-in-Bildern/>. [01.06.2019.]

Graphics 11: Parking situation at RWTH Aachen University



RWTH Aachen: Parkzone Mitte. In: rwth-aachen. <http://www.rwth-aachen.de/cms/root/Die-RWTH/Mobilitaet/~jgyj/Parkraumbewirtschaftung/>. [01.06.2019.]

Graphics 12: Personal evaluation

Requirements	Heinrich-Heine-University	RWTH Aachen University
Quality of Education		
• importance of faculty	2	2
• internationality	1	2
Accessibility of campus		
• size of campus	2	0
• short distances	2	0
• barrier-free entrances	2	2
• mobility within lecture theatres	0	0
Infrastructure of city		
• accessibility of public transports	2	1
• parking	2	2
Living		
• accessible housing locations	1	1
• distance to university	2	1
Support		
• scholarships	2	2
• study counselling for disabled students	2	2
Total score	20	15

0 = expectations are not fulfilled; 1 = neutral; 2 = expectations are fully fulfilled